



FOR US POSTAL SERVICE DELIVERY:

Office of Laboratory Animal Welfare
Division of Assurances
6705 Rockledge Drive
RKL 1, Suite 360, MSC 7982
Bethesda, Maryland 20892-7982
Home Page: <http://grants.nih.gov/grants/olaw/olaw.htm>

FOR EXPRESS MAIL:

Office of Laboratory Animal Welfare
Division of Assurances
6705 Rockledge Drive, Suite 360
Bethesda, Maryland 20817
Telephone: (301) 496-7163
Facsimile: (301) 402-7065

August 13, 2009

Reference: Assurance #**A4587-01**

Allan D. Headley, PhD
Dean of Graduate Studies and Research
Texas A&M University – Commerce
Graduate Studies and Research
P.O. Box 3011
Commerce, TX 75429-3011

Dear Dr. Headley:

I am pleased to inform you that the Office of Laboratory Animal Welfare (OLAW) has reviewed and **conditionally approved** your institution's Animal Welfare Assurance (Assurance). This conditional approval is in effect for 6 months and will require you to forward documentation that the on-line training program has been implemented and that all relevant personnel have appropriately completed the training. Please provide this information to OLAW to my attention by February 28, 2010.

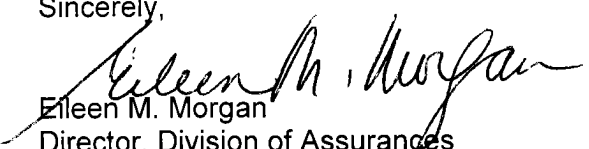
Your Assurance, number **A4587-01**, became effective on **August 13, 2009** and will expire on **August 31, 2013**. Please include the Assurance number in all correspondence to OLAW. A copy of the Assurance signature page is enclosed. This signature page provides verification of approval by OLAW and specifies the period during which your Assurance is effective.

Thank you for your cooperation in submitting an Assurance in compliance with the Public Health Service (PHS) Policy on Humane Care and Use of Laboratory Animals (Policy) as revised August 2002. The Assurance is a key document in defining the relationship of your Institution to the PHS. It sets forth the responsibilities and procedures of your Institution regarding the care and use of laboratory animals.

I would especially call your attention to the Annual Report requirement, which is a key element of the Assurance and is essential for continued compliance with the PHS Policy. Please note that a Report to OLAW is required at least once every 12 months. The reporting period your institution requested in writing is **September 1 through August 31st**. Therefore your Annual Report will be due to OLAW by **September 30th, 2010**.

Thank you for your attention to these matters. If I may be of further assistance, please do not hesitate to contact me.

Sincerely,


Eileen M. Morgan
Director, Division of Assurances
Office of Laboratory Animal Welfare, NIH

Enclosure:

cc:
Lani Lyman-Henley, PhD, IACUC Chair
Ann Marie Brasile-Mejac, NHLBI

VII. INSTITUTIONAL ENDORSEMENT AND PHS APPROVAL

A. Authorized Institutional Official

Name: Allan D. Headley, PhD

Title: Dean of Graduate Studies & Research

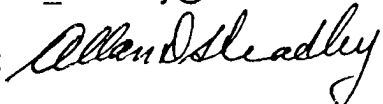
Name of Institution: Texas A&M University-Commerce

Address: Graduate Studies & Research
P O Box 3011
Commerce, TX 75429-3011

Phone: 903/886-5159

Fax: 903/468-8784

E-mail: Allan_Headley@tamu-commerce.edu

Signature: 

Date: 8/11/09

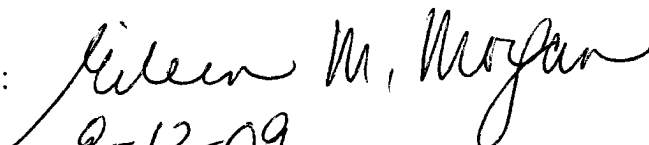
B. PHS Approving Official

Name: EILEEN M. MORGAN
DIRECTOR, DIVISION OF ASSURANCES
OFFICE OF LABORATORY ANIMAL WELFARE
NATIONAL INSTITUTES OF HEALTH
Title: 6507 ROCKLEDGE DRIVE
RKL1, SUITE 360, MSC 7982
Address: BETHESDA, MD 20892-7982
301-451-0384
301-402-7065

Phone:

Fax:

E-mail:

Signature: 

Date: 8-13-09

C. Effective Date of Assurance: 8-13-09

D. Expiration Date of Assurance: 8-31-13

TEXAS A&M UNIVERSITY-COMMERCE

ANIMAL WELFARE ASSURANCE in accordance with the PHS Policy for Humane Care and Use of Laboratory Animals

I, Allan D. Headley, as named Institutional Official for animal care and use at Texas A&M University- Commerce, hereinafter referred to as Institution, by means of this document, provide assurance that this Institution will comply with the Public Health Service Policy on Humane Care and Use of Laboratory Animals, hereinafter referred to as PHS Policy.

I. APPLICABILITY OF ASSURANCE

This Assurance is applicable to all research, research training, experimentation, biological testing, and related activities, hereinafter referred to as activities, involving live vertebrate animals supported by the Public Health Service (PHS) and conducted at this Institution, or at another institution as a consequence of the subgranting or subcontracting of a PHS-conducted or -supported activity by this Institution.

"Institution" includes the following branches and major components of Texas A&M University-Commerce: Texas A&M University-Commerce

II. INSTITUTIONAL COMMITMENT

A. This Institution will comply with all applicable provisions of the Animal Welfare Act and other Federal statutes and regulations relating to animals.

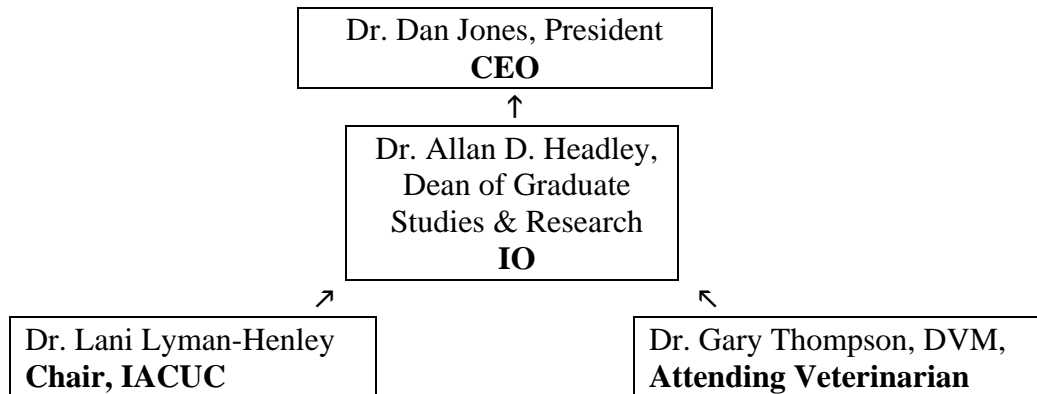
B. This Institution is guided by the "U.S. Government Principles for the Utilization and Care of Vertebrate Animals Used in Testing, Research, and Training."

C. This Institution acknowledges and accepts responsibility for the care and use of animals involved in activities covered by this Assurance. As partial fulfillment of this responsibility, this Institution will ensure that all individuals involved in the care and use of laboratory animals understand their individual and collective responsibilities for compliance with this Assurance, as well as all other applicable laws and regulations pertaining to animal care and use.

D. This Institution has established and will maintain a program for activities involving animals in accordance with the "Guide for the Care and Use of Laboratory Animals" ("Guide").

III. INSTITUTIONAL PROGRAM FOR ANIMAL CARE AND USE

A. The lines of authority and responsibility for administering the program and ensuring compliance with this Policy are as follows:



B. The qualifications, authority, and percent of time contributed by the veterinarian(s) who will participate in the program are as follows:

- Dr. Gary Thompson, DVM. Attending Veterinarian. Over 25 years experience with large animal veterinary practices as used for the Agriculture program. Dr. Thompson has delegated program authority and responsibility for the Institution's animal care and use program. Time Contributed to Program: Monthly meetings and approximately one additional hour per month in various consultations.
- Dr. Mike Sealock, DVM, BS Zoology. Consulting Veterinarian. Dr. Sealock acts as consultant for laboratory animals and exotics housed in Animal Care Facility on an as-needed basis. He has over 20 years experience in veterinary practice, is a member of the Association of Avian Veterinarians, American Association of Reptiles, attends annual Texas A&M meetings for Exotics Veterinarians, and numerous other conferences.
- The Educational Farm & Ranch utilizes several additional experienced veterinarians to care for the livestock species as needed, including Dr. Buddy Gregg (Gregg Animal Clinic), Drs. Mac Glaess, Kevin Bankston & Rob Sherman (Hopkins County Vet Clinic), and Drs. John Stowater & Rick Allison (Dairy Health Services).

C. The Institutional Animal Care and Use Committee (IACUC) at this Institution is properly appointed in accordance with the PHS Policy IV.A.3.a and is qualified through the experience and expertise of its members to oversee the Institution's animal care and use program and facilities. The IACUC consists of at least five members, and its membership meets the composition requirements set forth in the PHS Policy, Section

IV.A.3.b. Attached is a list of the chairperson and members of the IACUC and their names, degrees, profession, titles or specialties, and institutional affiliations

D. The IACUC will:

1. Review at least once every six months the Institution's program for humane care and use of animals, using the "Guide" as a basis for evaluation. The IACUC procedures for conducting semiannual program reviews utilize the "Sample Semiannual Program and Facility Review," the Guide, and the Policy, as a basis for evaluation during their convened meetings; and categorize any program deficiencies as minor or significant and develop a plan and schedule for correction for any deficiencies.
2. Inspect at least once every six months all of the Institution's animal facilities, including satellite facilities, using the "Guide" as a basis for evaluation. The IACUC procedures for conducting semiannual facility inspections are as follows: Every six months all of the University's animal facilities, including satellite holding facilities and areas in which surgical manipulations are performed, are inspected using the Guide, and the Policy, as a basis for evaluation, with at least two IACUC members inspecting all facilities where USDA-covered species are housed or used and IACUC members and/or ad hoc consultants inspecting where non-USDA covered species are housed or used. Facility inspection findings are presented at convened IACUC meetings. Any IACUC member can attend an inspection of any facility.
3. Prepare reports of the IACUC evaluations as set forth in the PHS Policy IV.B.3 and submit the reports to the Institutional Official. The IACUC procedures for developing reports and submitting them to the Institutional Official are as follows: Evaluations are prepared as outlined in the "Sample Format for the Semiannual Report to the Institutional Official," categorizing any deficiencies as minor or significant and includes a timetable for corrections, and is circulated to the Committee members via email prior to monthly meetings for comment. Reports are presented at the next convened meeting of the IACUC and details (including any minority views) recorded in minutes.
4. Review concerns involving the care and use of animals at the Institution. The IACUC procedures for reviewing concerns are as follows: Contact numbers are provided at the IACUC webpage and departmental offices. The IACUC reviews all concerns with safeguards to protect the individual's identity, and if needed, appoints a subcommittee to perform an IACUC investigation; review any subcommittee investigation findings at a convened meeting and takes appropriate action, if warranted, up to and including suspension of a protocol. The IACUC reports concerns and any related IACUC findings and recommendations via the Chair or Attending Veterinarian to the Institutional Official. If the committee determines a suspension is warranted, the chair will contact the investigator and outline the concerns and the IACUC's recommendations concerning corrective action. The investigator will be required to provide a written response detailing how the concern is being addressed and the timetable for implementing those improvements. If the IACUC suspends an activity involving animals, the IO in consultation with the IACUC shall review the reasons for suspension, take appropriate corrective action, and report that action with a full explanation to OLAW.

5. Make written recommendations to the Institutional Official regarding any aspect of the Institution's animal program, facilities, or personnel training. The procedures for making recommendations to the Institutional Official are as follows: The IACUC will evaluate, usually by subcommittee, a particular aspect of the University's animal program, facilities, or personnel training; review subcommittee reports at a convened meeting and vote to approve the report; and submit written recommendations for review by the Institutional Official.

6. In accord with the PHS Policy IV.C.1-3, the IACUC shall review and approve, require modifications in (to secure approval), or withhold approval of PHS-supported activities related to the care and use of animals. The IACUC procedures for protocol review are as follows: Individuals proposing to use animals in research or teaching must complete an IACUC Animal Use Protocol (AUP) form, which must be submitted to the Office of Graduate Studies and Research. AUPs are sent via the IACUC chair to all committee members via email list for pre-review. AUPs are distributed to the entire IACUC with instructions regarding the designated review process and a deadline to call for Full Committee Review (FCR, generally 5 business days). Any member of the IACUC can make the decision to send the protocol to FCR; if no member refers the protocol to FCR by the deadline period the assigned Designated Committee has the authority to approve, require modifications (to secure approval) or request full committee review. The DR does not have the power to withhold approval.

Designated Committees are appointed by the IACUC chair to include at least one member with experience and/or technical knowledge in the area of the protocol to be reviewed, and at least one other member to total 2-3 members. Unanimous agreement must be reached for AUP approval.

All new AUPs are presented at convened meetings of a quorum of the IACUC (held monthly), and evaluated. Outcomes of all Designated Member Review cases are reported, and any protocols requiring FCR are reviewed. AUP authors are contacted following AUP evaluation with results obtained, which would be either (1) copies of signed approval sheets and a letter including the assigned protocol number when approved, (2) a statement of withholding of approval, or (3) a report specifying required modifications to secure approval. In the latter condition, the IACUC would determine at the initial review whether such modifications would require re-submission for a full review or designated member review. All research, teaching or demonstration activities involving vertebrate animals must be under an IACUC-approved protocol.

The IACUC requires members to decline participation in any type of IACUC review and/or voting, in which the member has a conflicting interest (including participation in the project, involvement in competing projects, a financial interest, a personal relationship, or other situation giving rise to a conflicting interest). Any member having a conflicting interest must leave the meeting during the discussion of and vote on the protocol, and thereby are not counted as part of the quorum for any vote taking place while thus absent. The IACUC requires a quorum to conduct its business. Voting occurs after IACUC review and deliberations at a convened meeting, and an approval vote of a majority of the quorum present is needed for any IACUC action.

7. Review and approve, require modifications in (to secure approval), or withhold approval of proposed significant changes regarding the use of animals in ongoing activities as set forth in the PHS Policy IV.C. The IACUC procedures for reviewing proposed significant changes in ongoing research projects are as follows: AUP authors must submit a description of proposed changes to the IACUC for pre-review of each case; authors will then be instructed as to the need to submit a new AUP with the proposed changes included for review, or for less significant changes will be asked to file an addendum to be acknowledged by the IACUC and attached to the associated AUP. These changes will be reviewed under Full Committee Review or Designated Member Review as described above.

8. Notify investigators and the Institution in writing of its decision to approve or withhold approval of those activities related to the care and use of animals, or of modifications required to secure IACUC approval as set forth in the PHS Policy IV.C.4. The IACUC procedures to notify investigators and the Institution of its decisions regarding protocol review are as follows: AUP authors are notified via email and hard copy. Investigators are provided with a letter of approval including the assigned Protocol number and a copy of the signed cover sheet of their AUP when approval is granted. If approval has been withheld, a report describing the required changes for re-evaluation, or reasons for denying approval, will be provided the investigator. Investigators must revise the AUP and/or responds to other conditions set by the IACUC in order to secure approval. Investigators may also appeal, in person, before a fully convened meeting of the IACUC. Approvals and denials are reported to the Institutional Official; steps in revision are included with the final outcome.

9. Conduct continuing review of each previously approved, ongoing activity covered by PHS Policy at appropriate intervals as determined by the IACUC, including a complete review in accordance with the PHS Policy IV.C.1-4 at least once every three years. The IACUC procedures for conducting continuing reviews are as follows: Investigators are asked to provide a brief report describing the status of ongoing activities, including numbers of animals used and any deviations from the filed AUP, every six months. Site visits may be made by IACUC members as part of such reviews. AUPs must be renewed with a full application re-submission every three years, reviewed by Designated Member Review or Full Committee Review as described above for new applications.

10. Be authorized to suspend an activity involving animals as set forth in the PHS Policy IV.C.6. The IACUC procedures for suspending an ongoing activity are as follows: Suspension of any protocol or approved activity involving animals may occur after review of the matter at a convened meeting of a quorum of the IACUC and through a vote of a majority of the quorum present. Reasons for suspension and planned implementation of appropriate corrective action will be reviewed with the Institutional Official, followed by submission of a full report to the Institutional Official, who then submits a written report to OLAW, for PHS supported research, USDA, and other relevant entities.

E. The occupational health and safety program for personnel working in laboratory animal facilities or have frequent contact with animals is as follows:

The occupational health and safety program is administered by the IACUC and regulatory assistance and guidance is provided by the Department of Risk Management and Safety. The Department of Risk Management and Safety, along with the Human Resources Training Function, administers the **Hazardous Communication Program** and the **Bloodborne Pathogen Program** for the university. These programs cover the hazards, personal safety, response, accident/injury prevention, and management of chemical hazards and Bloodborne Pathogen exposures. All faculty, staff, and administration that have potential exposure or work with either hazardous material or blood/bodily fluids (animal or human) are required to attend this training. Training records are maintained by the Human Resource Department. A copy of either program can be made available through the Department of Risk Management and Safety. Medical aspects of the program are contracted through the Live Oak Professional Center, including health history evaluations. All university employees are instructed to report injuries and accidents immediately to their supervisor and HR, as is stated in the University Handbook. First aid kits are required in all laboratories and work areas, and further care is available through Student Health Services and the Live Oak Professional Center.

Covered personnel are faculty, staff, students and visiting scholars who work directly with vertebrate animals, unfixed animal tissues or body fluids, and those who work in animal housing areas. Individuals requiring inclusion are identified by inclusion on AUP submissions, employment in animal care capacity, or enrollment in courses involving contact/use of live vertebrate animals.

Training is provided all covered personnel concerning the details of potential risk (hazards, allergy, zoonoses, etc.) in each area along with advice and recommendations about personal protective equipment, cases of special risk (pregnancy, illness or immunocompromized condition). Training materials and online sites are monitored by the Dept. of Risk Management and Safety, the Live Oak Professional Center, and the IACUC for content and appropriate coverage.

Animal Care Facility Personnel are additionally required to be immunized against tetanus & hepatitis B (or have documented contra-indicators or special waivers on file). Appropriate protective garments are provided (aprons, gloves, masks, etc.) as required for the specific location and task. Specific training is provided by Investigators and Animal Care Facility Director to correspond with those animal species in use. Investigators and ACF Director are required to document training as part of the AUP process.

F. The total gross number of square feet in each animal facility (including each satellite facility), the species of animals housed therein and the average daily inventory of animals, by species, in each facility is provided in the attached Facility and Species Inventory table.

G. The training or instruction available to scientists, animal technicians, and other personnel involved in animal care, treatment, or use is as follows: Principle investigators must document training and experience of their personnel as part of the AUP approval process, which specifically requests documentation regarding measures to limit animal pain and distress, minimize numbers of animals required, and demonstrate humane practice of animal care and use. Other individuals requiring training documentation are identified by inclusion on AUP submissions, employment in animal care capacity, or enrollment in courses involving contact/use of live vertebrate animals.

All protocols submitted to the IACUC for review must describe experience/training personnel have had or will have with this specific animal model(s). The IACUC then performs an assessment of the personnel's ability to work humanely with animals. The IACUC may assign specific training to personnel as a condition of their approval. Any additional training required is provided on an as-needed basis, and may be arranged through the TAMU-C Training Coordinator and/or the Animal Care Facility Director; oversight of such programs will be through the Department of Risk Management and Safety for compliance related material and function.

Training in all topics in 9CFR, Part 2, Subpart c, section 2.32(c) is available in the form of individualized training sessions given on an as-needed basis as indicated during the protocol review process. Online training is also available to faculty/staff/students for a variety of relevant topics through AWIC/NAL and the AALAS Learning Library. Texas A&M University-Commerce is in the process of identifying appropriate online courses to offer to all A&M-Commerce employees. Such courses will include instruction regarding measures to limit animal pain and distress, minimize numbers of animals required to obtain valid results, and demonstrate humane practice of animal care and use. A&M-Commerce will initiate the online training process by November 30, 2009.

The IACUC chair takes part in regular training workshops and disseminates information to fellow committee members. The IACUC expects all members to review the "Institutional Animal Care and Use Committee Guidebook" and refer to IACUC and OLAW websites and resources; and are provided a copy of the PHS Policy and the Animal Welfare Assurance. IACUC members are required to take part in all online training required by faculty/staff/students, plus those units specified for IACUC members. Opportunities are provided to attend educational conferences such as SCAW, IACUC 101, and PRIM&R.

IV. INSTITUTIONAL PROGRAM EVALUATION AND ACCREDITATION

All of this Institution's programs and facilities (including satellite facilities) for activities involving animals have been evaluated by the IACUC within the past six months and will be re-evaluated by the IACUC at least once every six months thereafter, in accord with the PHS Policy IV.B.1-2. Reports have been and will continue to be prepared in accord with the PHS Policy IV.B.3. All IACUC semiannual reports will include a description of the nature and extent of this Institution's adherence to the "Guide." Any departures from

the “Guide” will be identified specifically and reasons for each departure will be stated. Reports will distinguish significant deficiencies from minor deficiencies. Where program or facility deficiencies are noted, reports will contain a reasonable and specific plan and schedule for correcting each deficiency. Semiannual reports of the IACUC’s evaluations will be submitted to the Institutional Official. Semiannual reports of IACUC evaluations will be maintained by this Institution and made available to the OLAW upon request.

This Institution is Category Two (2)—not accredited by the Association for Assessment and Accreditation of Laboratory Animal Care, International (AAALAC). As noted above, reports of the IACUC’s semiannual evaluations (program reviews and facility inspections) will be made available upon request.

V. RECORDKEEPING REQUIREMENTS

- A. This Institution will maintain for at least three years:
1. A copy of this Assurance and any modifications thereto, as approved by the PHS.
 2. Minutes of IACUC meetings, including records of attendance, activities of the committee, and committee deliberations.
 3. Records of applications, proposals, and proposed significant changes in the care and use of animals and whether IACUC approval was given or withheld.
 4. Records of semiannual IACUC reports and recommendations (including minority views) as forwarded to the Institutional Official, Dr. Allan D. Headley.
 5. Records of accrediting body determinations.
- B. This Institution will maintain records that relate directly to applications, proposals, and proposed changes in ongoing activities reviewed and approved by the IACUC for the duration of the activity and for an additional three years after completion of the activity.
- C. All records shall be accessible for inspection and copying by authorized OLAW or other PHS representatives at reasonable times and in a reasonable manner.

VI. REPORTING REQUIREMENTS

- A. This Institution’s reporting period is September 1 – August 31. The IACUC, through the Institutional Official, will submit an annual report to OLAW on September 30 of each year. The report will include:
1. Any change in the accreditation status of the Institution (e.g., if the Institution obtains accreditation by AAALAC or AAALAC accreditation is revoked), any change in the description of the Institution's program for animal care and use as described in this Assurance, or any change in the IACUC membership. If there are no changes to report, this Institution will provide written notification that there are no changes.
 2. Notification of the dates that the IACUC conducted its semiannual evaluations of the Institution's program and facilities (including satellite facilities) and submitted the evaluations to the Institutional Official, Dr. Allan D. Headley.
- B. The IACUC, through the Institutional Official, will promptly provide OLAW with a full explanation of the circumstances and actions taken with respect to:
1. Any serious or continuing noncompliance with the PHS Policy.

2. Any serious deviations from the provisions of the "Guide."
3. Any suspension of an activity by the IACUC.

C. Reports filed under sections VI.A. and VI.B. of this document shall include any minority views filed by members of the IACUC.

VII. INSTITUTIONAL ENDORSEMENT AND PHS APPROVAL

A. Authorized Institutional Official

Name: Allan D. Headley, PhD

Title: Dean of Graduate Studies & Research

Name of Institution: Texas A&M University-Commerce

Address: Graduate Studies & Research
P O Box 3011
Commerce, TX 75429-3011

Phone: 903/886-5159

Fax: 903/468-8784

E-mail: Allan_Headley@tamu-commerce.edu

Signature:

Date:

B. PHS Approving Official

Name:

Title:

Address:

Phone:

Fax:

E-mail:

Signature:

Date:

C. Effective Date of Assurance:

D. Expiration Date of Assurance:

MEMBERSHIP OF THE INSTITUTIONAL ANIMAL CARE AND USE COMMITTEE

DATE:

NAME OF INSTITUTION: Texas A&M University-Commerce

ASSURANCE NUMBER:

Chairperson Name, Title, and Degree/Credentials		Business Address, Phone, Fax, and Email of Chairperson	
Name*: Lani Lyman-Henley		Address*: Department of Biological & Environmental Science Texas A&M University-Commerce Commerce, TX	
Title*: Ad-Interim Assistant Professor			

Degree/credentials*: PhD	Phone*:9725714607	Fax*:9038865997	Email*: dr_zot@yahoo.com
--------------------------	-------------------	-----------------	--------------------------

Name of Member/Code**	Degree/Credentials	Position Title	PHS Policy Requirements***
Michael Hanna	PhD	Assistant Professor of Biology	S
Lindsey Johnson	BS, MS	Equine Sciences Lecturer & Farm Technician	NS
Mary McDaniels	DDS	Dentist	NA
Frank Miskevich	PhD	Assistant Professor of Biology	S
Scott Stewart	BS, MS	Farm Manager	NS
Gary Thompson	DVM/AVMA, TVMA	Veterinarian	V
Tara Tietjen-Smith	BA, Med, DA	Assistant Professor of Health & Human Performance	NS

*This information is mandatory.

**Names of members, other than the chairperson and veterinarian, may be represented by a number or symbol in this submission to OLAW. Sufficient information to determine that all appointees are appropriately qualified must be provided and the identity of each member must be readily ascertainable by the Institution and available to authorized OLAW or other PHS representatives upon request.

***PHS Policy Requirements - identify which IACUC members meet the four criteria below:

- Veterinarian (V) - a veterinarian with direct or delegated program responsibility.
- Scientist (S) - a practicing scientist experienced in research involving animals.
- Nonscientist (NS) - a member whose primary concerns are in non-scientific areas (e.g. ethicist, lawyer, member of the clergy).
- Nonaffiliated (NA) - a member who is not affiliated with the Institution in any way other than as a member of the IACUC, and who is not a member of the immediate family of a person who is affiliated. This member is expected to represent the interests of the general community in the proper care and use of animals and should not be a laboratory animal user. A consulting attending veterinarian may not be considered nonaffiliated.

Notes:

1. All members must be appointed by the CEO (or individual with specific written delegation to appoint members) and must be voting members. Ad hoc or nonvoting members may be listed and identified as such, but are not considered members for the purpose of the PHS Policy, and do not contribute to a quorum.
2. If Alternate members are listed, identify for whom (by name or code number, not specialty) they will serve as Alternates.

OTHER KEY CONTACTS (OPTIONAL)

If there are other individuals within the Institution who may be contacted regarding this Assurance, please provide information below.

Name:

Title:

Phone & Fax:

E-mail:

Name:

Title:

Phone & Fax:

E-mail:

FACILITY AND SPECIES INVENTORY

DATE:

NAME OF INSTITUTION: Texas A&M University-Commerce

ASSURANCE NUMBER:

Laboratory, Unit, or Building*	Gross Square Feet (including service areas)	Species Housed in Unit (use complete common names)	Approx. Average Daily Inventory
Cattle pasture 1 (Farm Bottom)	200 acres	beef cattle	30
Cattle pasture 2 (Hay barn)	85 acres	beef cattle	20
Cattle pasture 3 (Dairy)	150 acres	beef cattle	50
Cattle pasture 4 (Partain bottom)	150 acres	beef cattle	30
Equine breeding unit	3 5-acre paddocks	horses	3
Broodmare pasture	30 acres	horses	12
Swine (hog barn)	1 acre	pigs	9
Goats (goat barn)	2 1- to 2-acre paddocks	goats	1 group of 10, 1 group of 20
ACF rm 245	12 x 13 foot room	Reptiles	~50
ACF rm 248	12 x 13 foot room	C57BL/6 lab mice	~ 100
ACF rm 249	12 x 13 foot room	domestic rats	~50
ACF rm 250	12 x 13 foot room	domestic mice	~200

*Institutions may identify animal areas in any manner, e.g., initials, ID number, etc. However, the name and location must be provided to OLAW upon request.